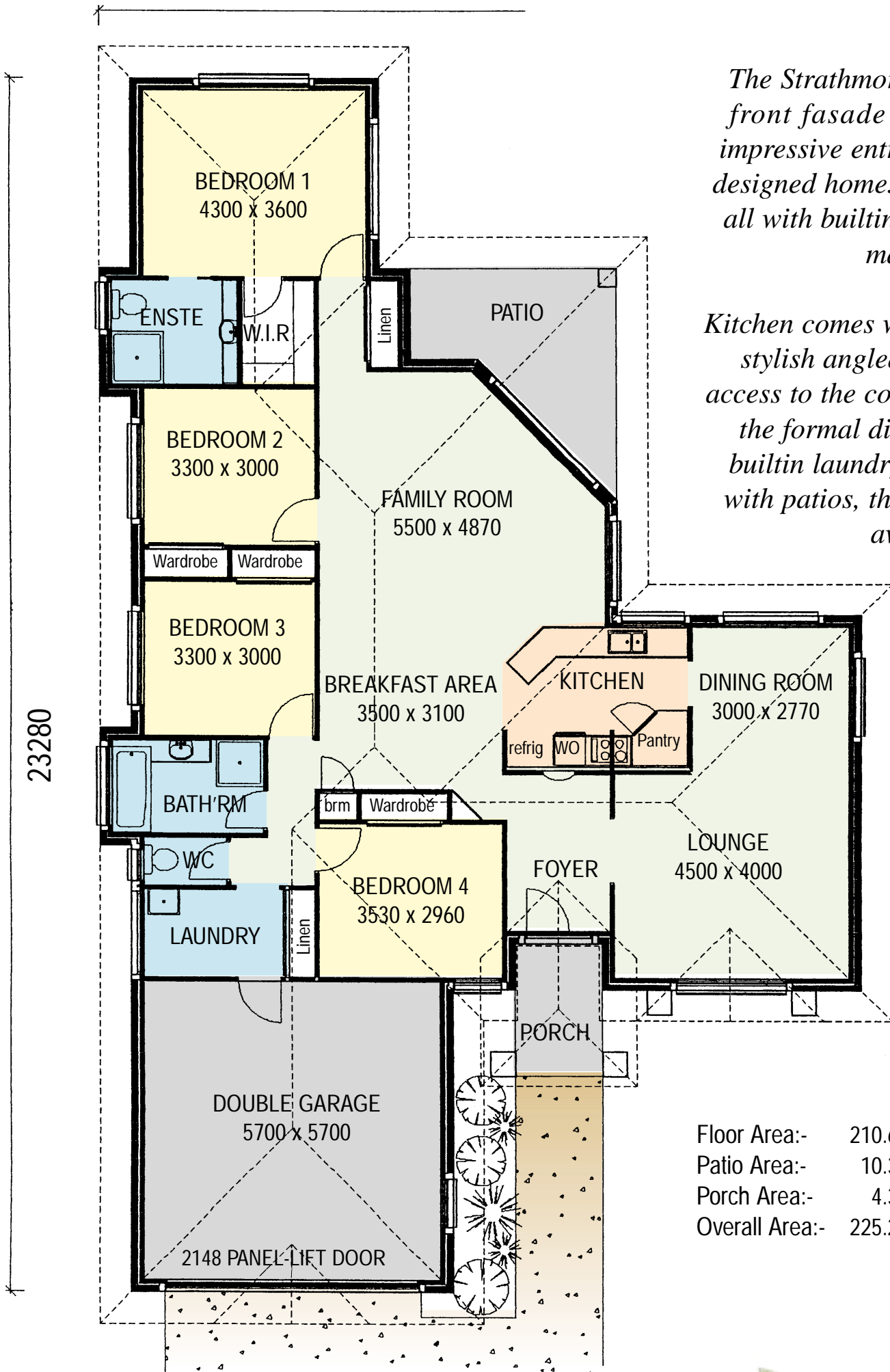


THE STRATHMORE



14600



The Strathmore, with the double gable front facade and portico makes an impressive entrance to just a beautifully designed home. Featuring four bedrooms all with builtin robes and ensuite to the main bedroom.

Kitchen comes with the breakfast area and stylish angled family room with rear access to the covered patio. Not forgetting the formal dining and lounge rooms, builtin laundry and double car garage with patios, this home just has to be an award winner.

Floor Area:- 210.6 Sq.m
 Patio Area:- 10.3 Sq.m
 Porch Area:- 4.3 Sq.m
 Overall Area:- 225.2 Sq.m

