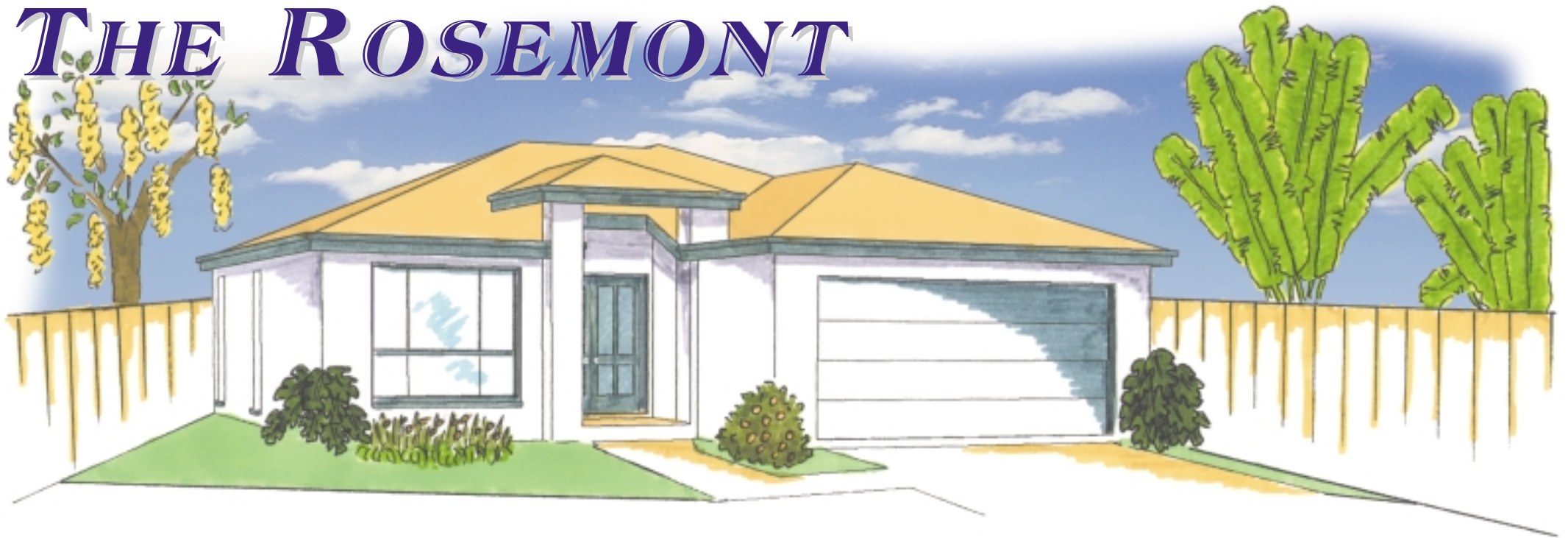
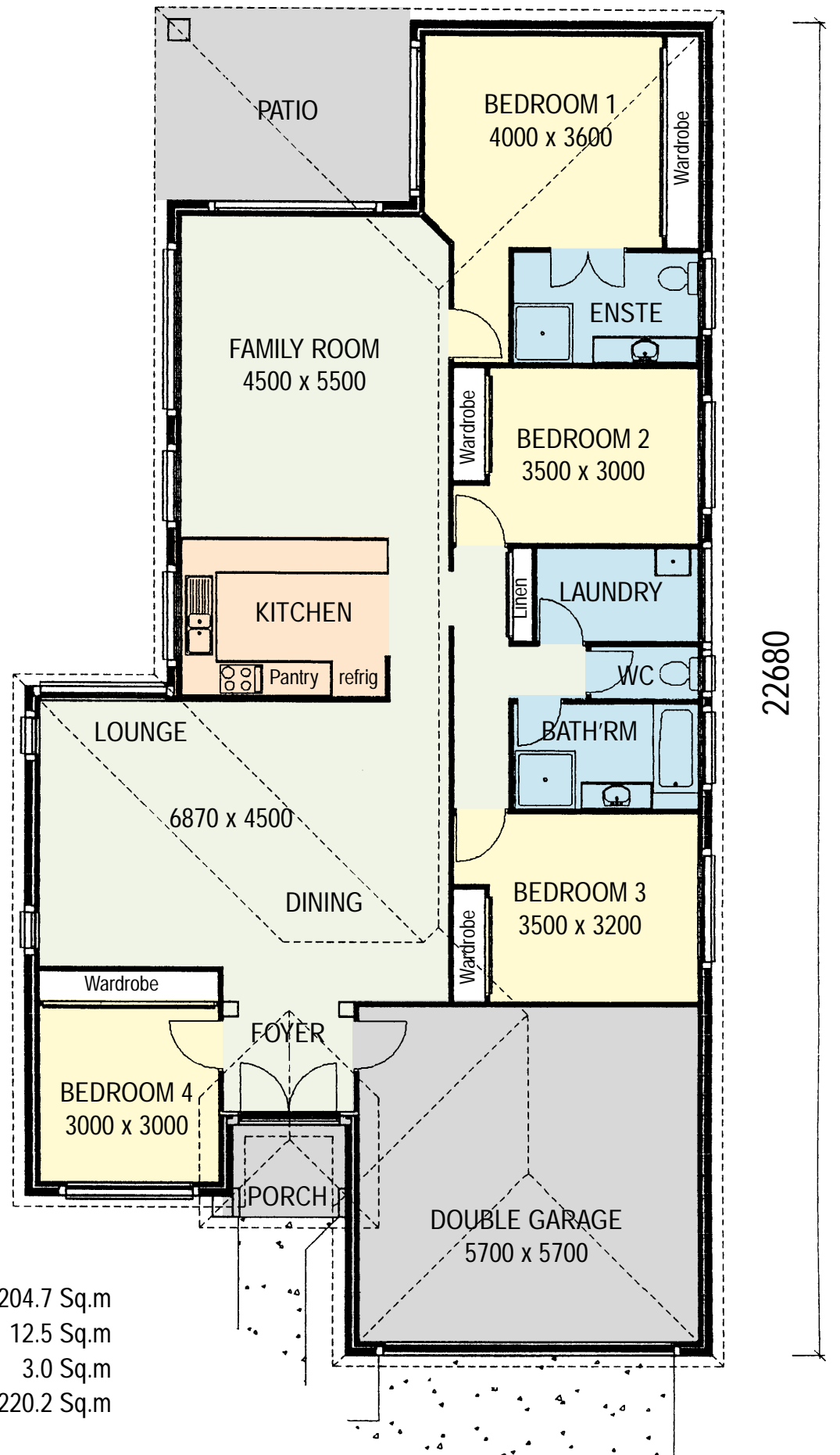


THE ROSEMONT



The Rosemont is suited for narrow blocks or just if your looking for more in your side yard. A four bedroom home which you may convert the fourth room to a home office quite easily.

Not missing out on any features and including the rear patio and front portico fasade makes the Rosemont a lovely home.



Floor Area:- 204.7 Sq.m
 Patio Area:- 12.5 Sq.m
 Porch Area:- 3.0 Sq.m
 Overall Area:- 220.2 Sq.m