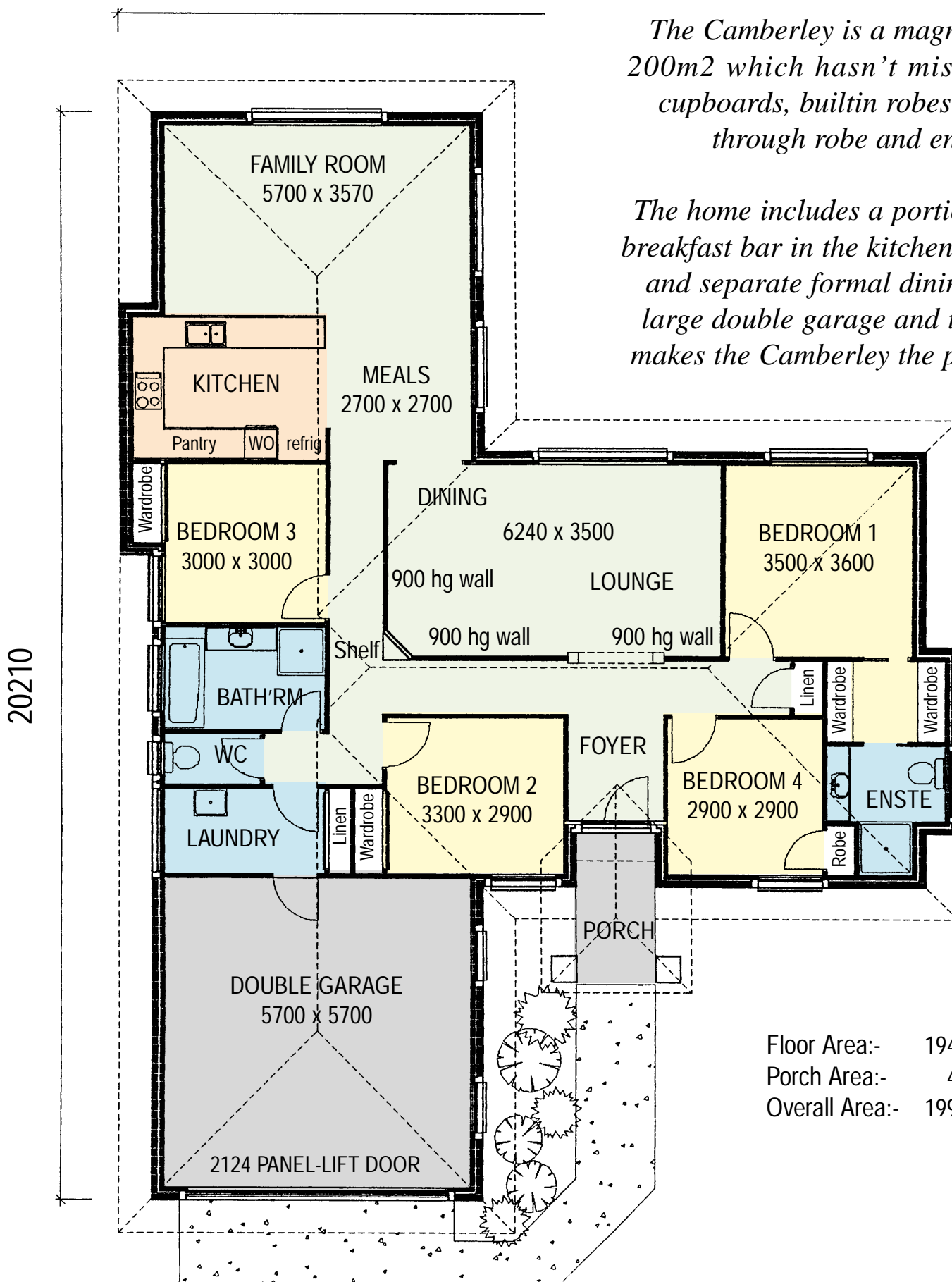


# THE CAMBERLEY



15610



*The Camberley is a magnificent home for under 200m<sup>2</sup> which hasn't missed a thing. Two linen cupboards, builtin robes in all bedrooms, walk through robe and ensuite to the main.*

*The home includes a portico entry, four bedrooms, breakfast bar in the kitchen, meals and family rooms and separate formal dining and lounge. With the large double garage and the separate laundry all makes the Camberley the perfect design in a home.*

Floor Area:- 194.7 Sq.m  
 Porch Area:- 4.6 Sq.m  
 Overall Area:- 199.3 Sq.m

