

THE CHISHOLM

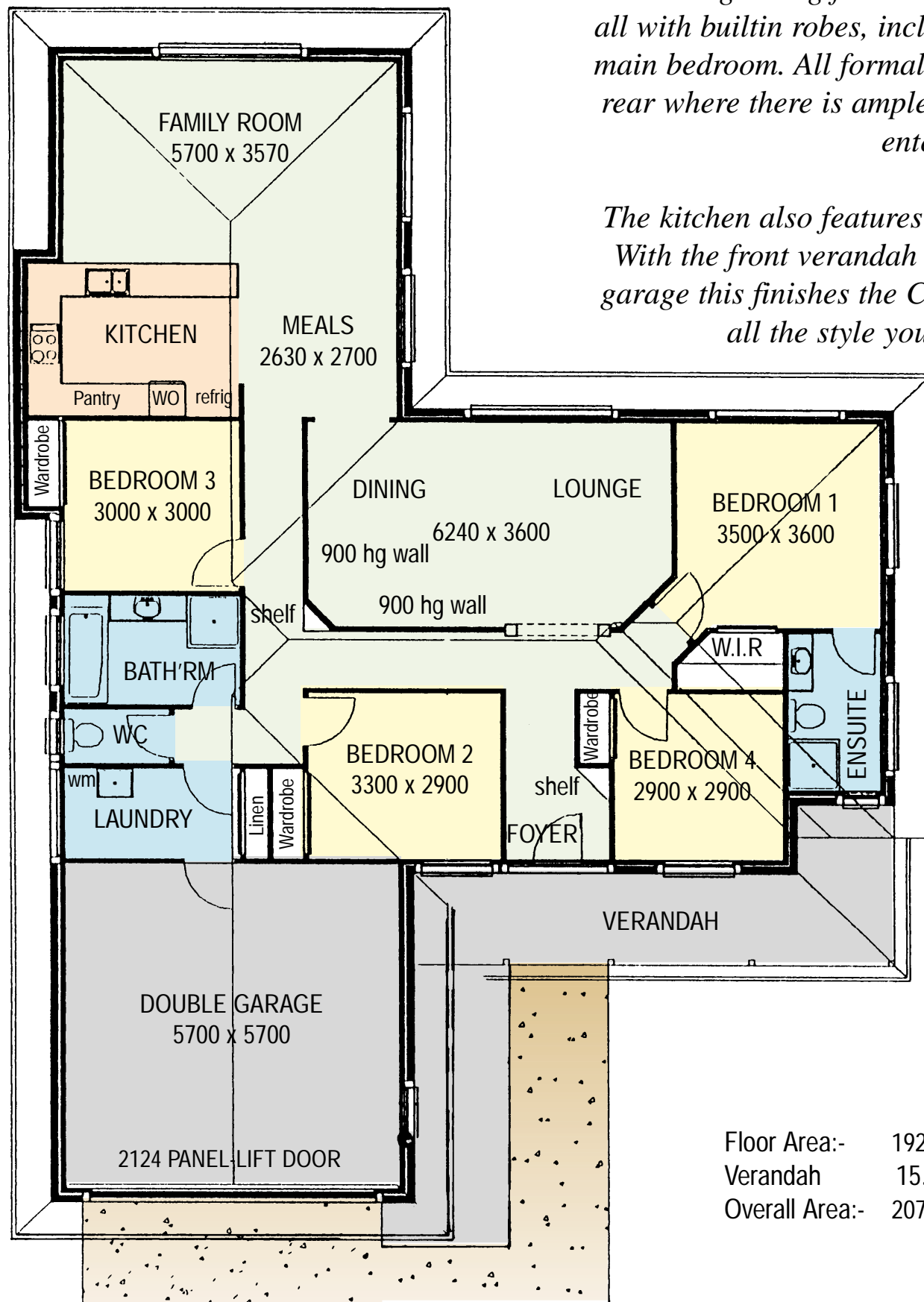


15010

The Chisholm, a modern day colonial home packed with features that growing families desire today. Having four bedrooms all with builtin robes, including an ensuite and W.I.Robe to the main bedroom. All formal and family rooms have access to the rear where there is ample opportunity for a pergola/barbecue entertaining area.

The kitchen also features a breakfast bar. With the front verandah and double car garage this finishes the Chisholm off with all the style you need.

20210



Floor Area:- 192.1 Sq.m
 Verandah 15.8 Sq.m
 Overall Area:- 207.9 Sq.m

